

Northwest Basin and Range Synthesis

Identifying Shared Priorities Across the Landscape

Project Scope

The Northwest Great Basin ecoregion is one of the most intact ecosystems in the west. It is a biological hotspot for migratory birds, greater sage-grouse and a stronghold for pronghorn antelope. However, altered fire regimes, invasive species, water scarcity, development, and climate change threaten the landscape's integrity. Several efforts are ongoing for individual species, specific threats or sub-geographies, and over 60 existing plans and assessments have been identified for the region. This project synthesizes these efforts and plans to create a holistic view of shared priorities across the landscape.



Pronghorn antelope in the Sheldon-Hart NWR region.

Goal

Our goal is to synthesize existing landscape planning and science to develop a shared conservation vision for regional stakeholders. In partnership with federal and state natural resource managers, tribes, NGOs, and private landowners, this project will address landscape-scale conservation actions for priority species, habitats, and ecosystems to support an ecologically connected Northwest Basin and Range landscape.

Principles

- Use an open, non-regulatory stakeholder-based collaborative effort
- Include adaptation strategies which incorporate climate change
- Complement or augment existing planning science, and local knowledge

- Promote landscape-scale connectivity and ecological and physical processes to maintain functionality
- Incorporate fire-resiliency to support current wildland fuels related efforts

Products

The products will provide information stakeholders can voluntarily apply to their management actions. Outcomes will facilitate landscape understanding of the value of lands, waters, and wildlife resources that may be affected by management actions. Products include:

- Shared set of conservation priorities for the ecoregion
- Maps of priority places for species and habitats
- Climate change assessment and adaptation strategies for conservation
- Shared strategies for implementing conservation action on the ground
- An online resource to help partners use and apply the adaptation strategies and conservation options
- An adaptive management framework for future collaborative conservation

Contacts

Levi Old, NWBR Synthesis, Project Coordinator
loid@thegreatbasininstitute.org

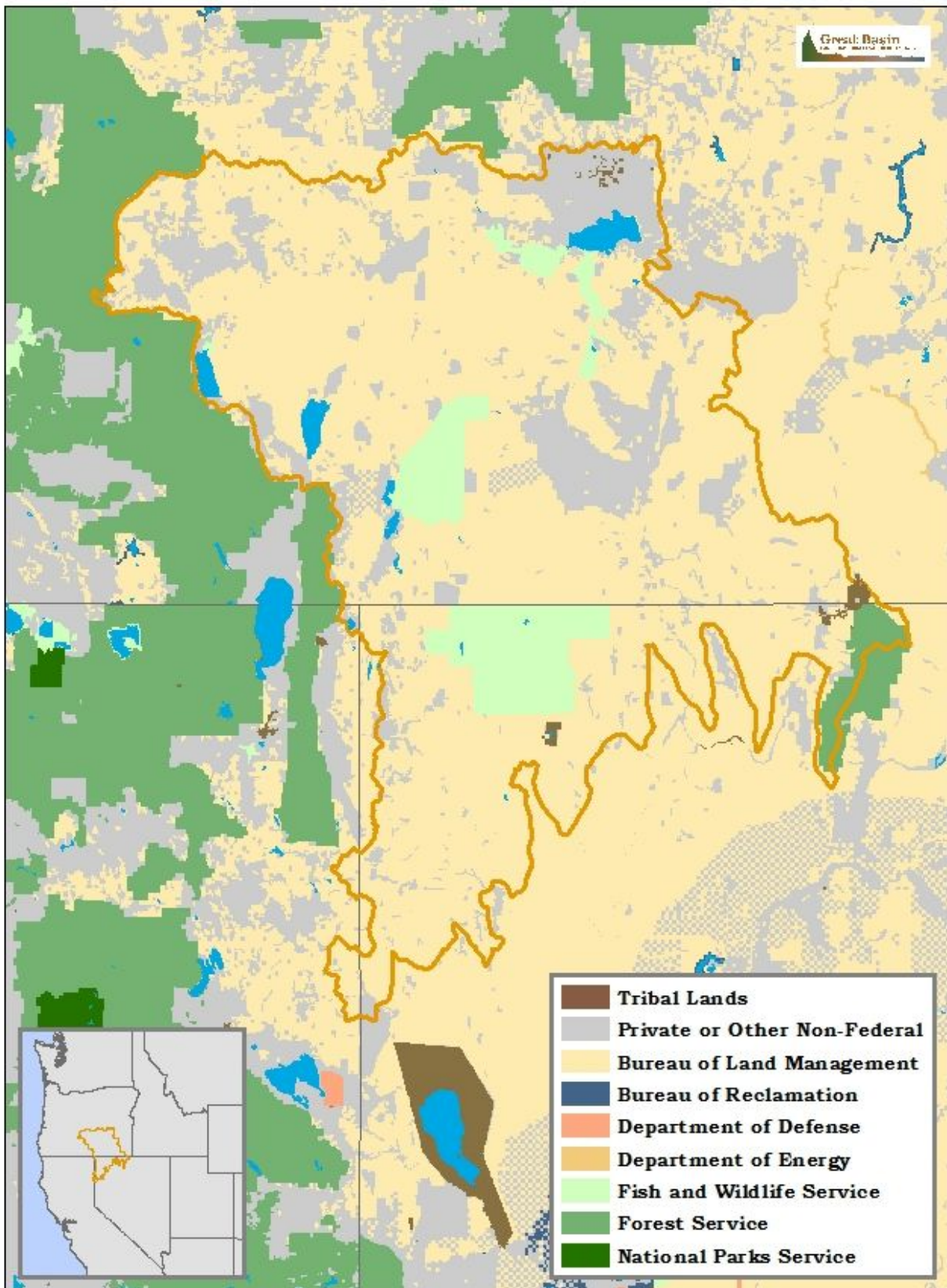
Todd E. Hopkins, Science Coordinator, GBLCC
todd_hopkins@fws.gov

Tom Miewald, Landscape Ecologist, USFWS
thomas_miewald@fws.gov

Project Website: www.greatbasinlcc.org



Project Boundary and Land Ownership Map



Website: www.greatbasinlcc.org/nw-basin-range